

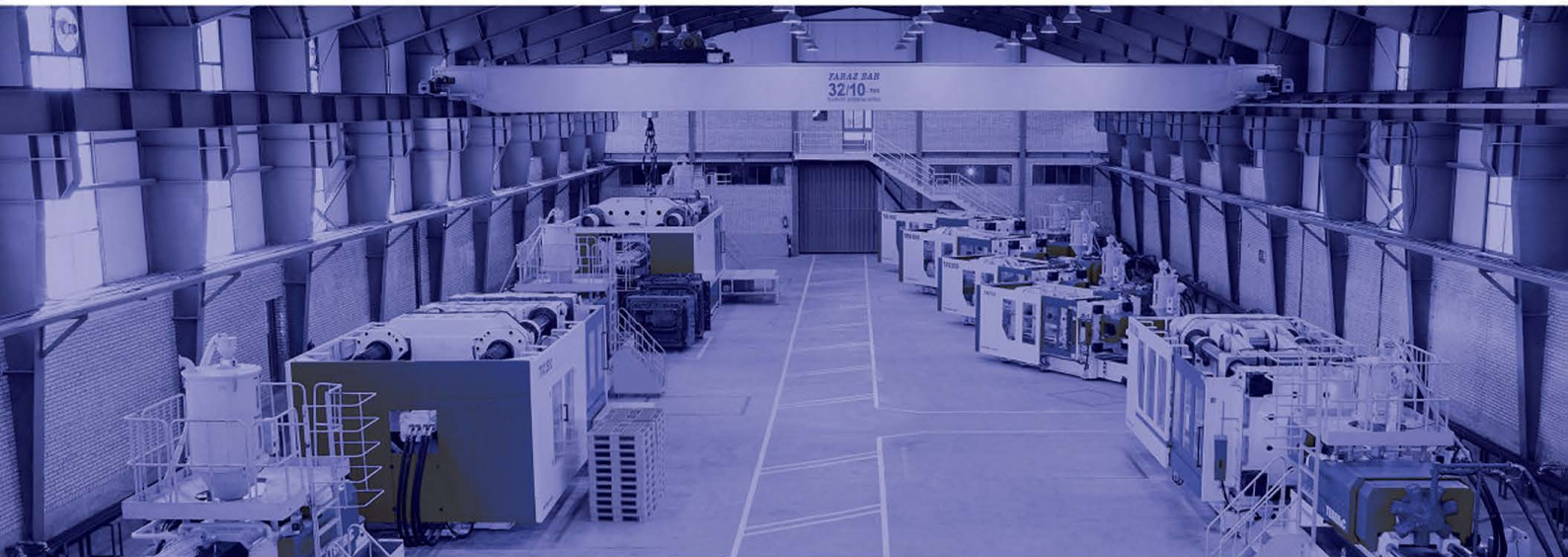


---

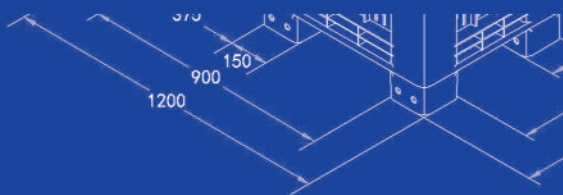
# Plastic Box Pallet

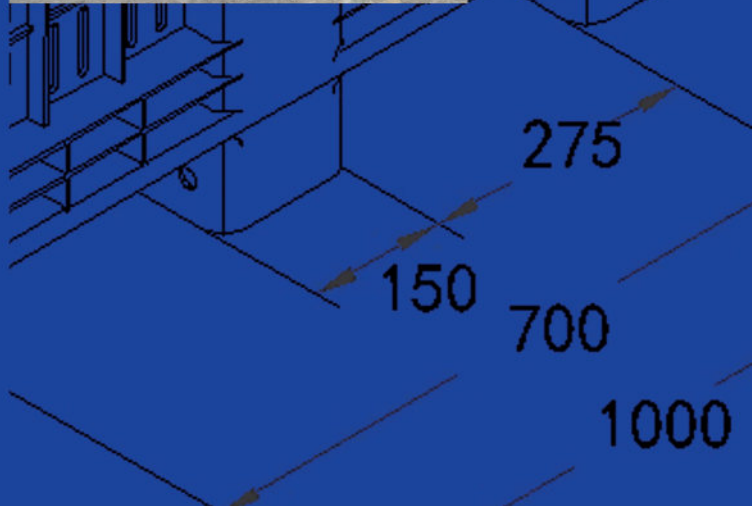
---

Products & Specifications



IranPlast Products  
▶ **PLASTIC BOX PALLET**





## IranPlast Products

# ► PLASTIC BOX PALLET

### Plastic Box Pallet:

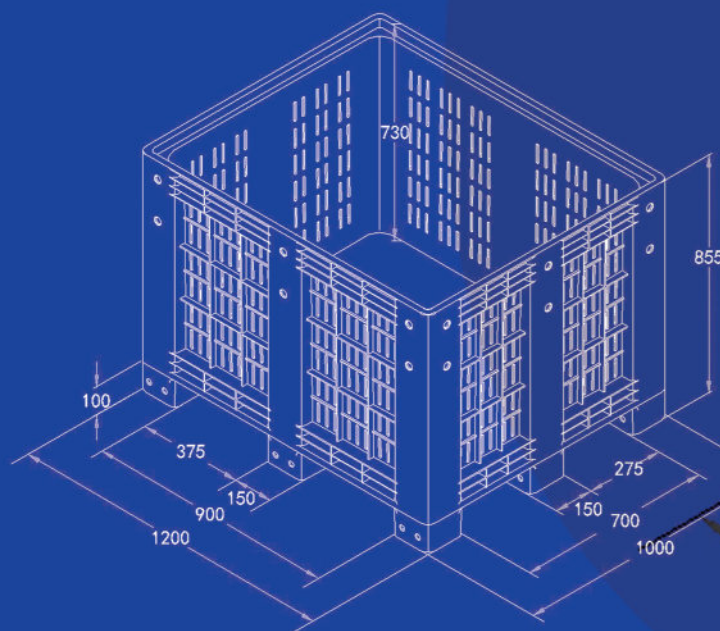
Plastic Box Pallet is the combination of bulk box/crate, and pallet emphasizes keeping both advantages and applications. Solid & Perforated structure optimizes the loading of components and bulk material safely, cleaner, and faster.

### Plastic Sleeve Box:

Plastic Sleeve Box Pallets are the combination of bulk box/crate and pallet, which enjoys flexibility in choosing the height of the box. The foldable sleeve mechanism opens a way to transport or stock your heavy load goods or bulk in an extreme optimum way.

### Plastic Lid of Box Pallet:

Plastic Lid of Box Pallet fits on ANY box pallets. A heavy-duty plastic lid sits on the Box Pallet with precision but still allows stacking of the boxes with ease. The lids are extremely strong and durable, completing the 360-degree protection for the boxes.



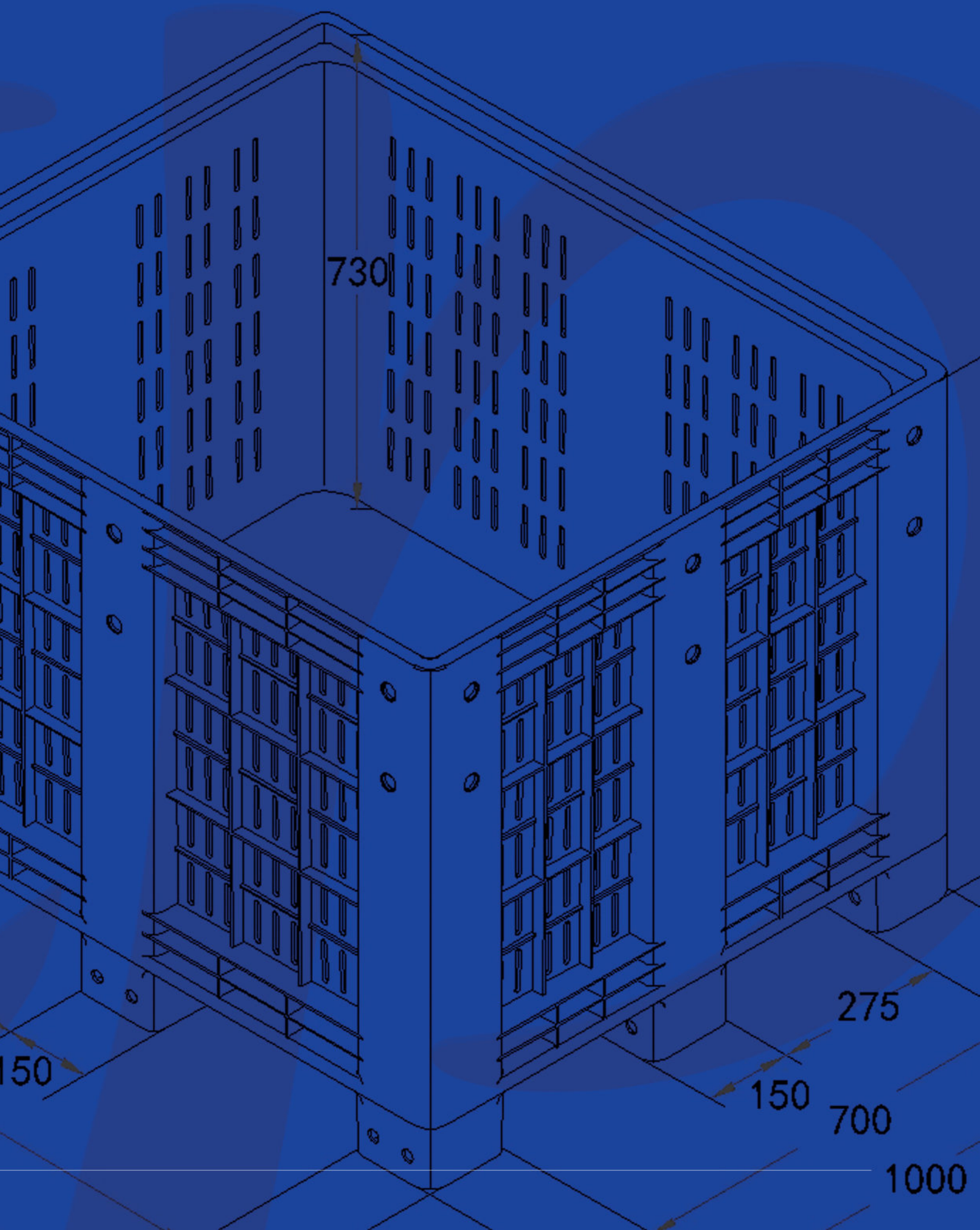
100

375

900

1200





## ► BP1-2R

### Solid Plastic Pallet Box



#### Specifications:

Material	Virgin HDPE Inj. grade + UV Stabilizer
External Dimension	1200 x 1000 x 915 mm (±5 mm)
Internal Dimension	1110 x 900 x 700 mm (±5 mm)
Net Weight	44.5 Kg (±3%)
Interior Volume	700 Ltr
Static Load	5,000 Kg (5 Boxes)
Dynamic Load	1,000 Kg
Racking Load	1,000 Kg
40' HC Cntr/88 m <sup>3</sup> TRK Capacity	84 / 104 Pcs

The load capacities are based on evenly distributed loads.

#### More details:

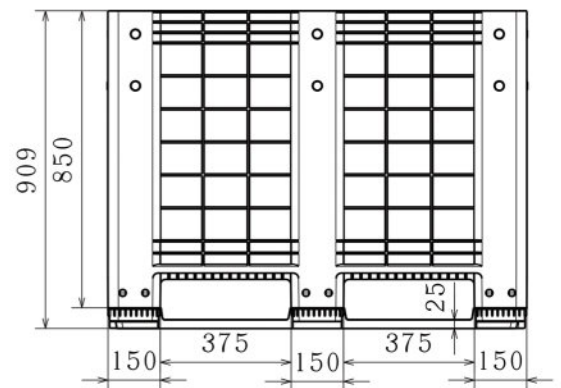


#### Properties:

- Solid walls
- Closed bottom base
- Anti-slip corners
- 2 skid runners (snap-on)
- 4-way entry
- Forklift / Hand-jack compatible
- One shot
- Stackable

#### Customization:

- Any standard RAL color
- RFID tag
- Wheels
- Lid
- Foldable wall
- Embossing logo



All dimensions may vary ±5 mm due to the production process & raw material characteristics.

# ► BP1-9L

## Solid Plastic Pallet Box

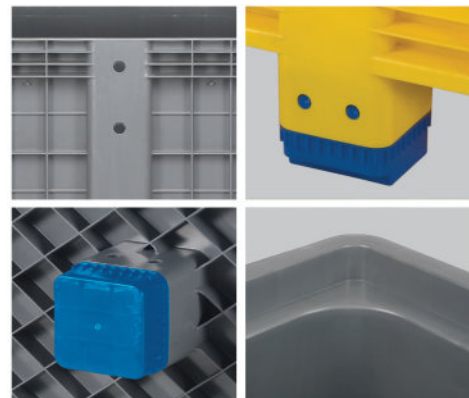


### Specifications:

Material	Virgin HDPE Inj. grade + UV Stabilizer
External Dimension	1200 x 1000 x 915 mm (±5 mm)
Internal Dimension	1110 x 900 x 700 mm (±5 mm)
Net Weight	43 Kg (±3%)
Interior Volume	700 Ltr
Static Load	5,000 Kg (5 Boxes)
Dynamic Load	1,000 Kg
Racking Load	300 Kg
40' HC Cntr/88 m <sup>3</sup> TRK Capacity	84 / 104 Pcs

The load capacities are based on evenly distributed loads.

### More details:

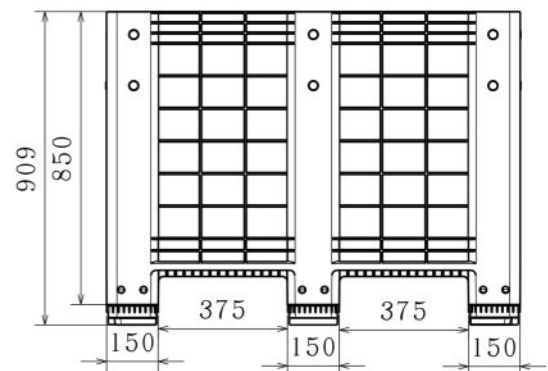


### Properties:

- Solid walls
- Closed bottom base
- Anti-slip corners
- 9 Legs
- 4-way entry
- Forklift / Hand-jack compatible
- One shot
- Stackable

### Customization:

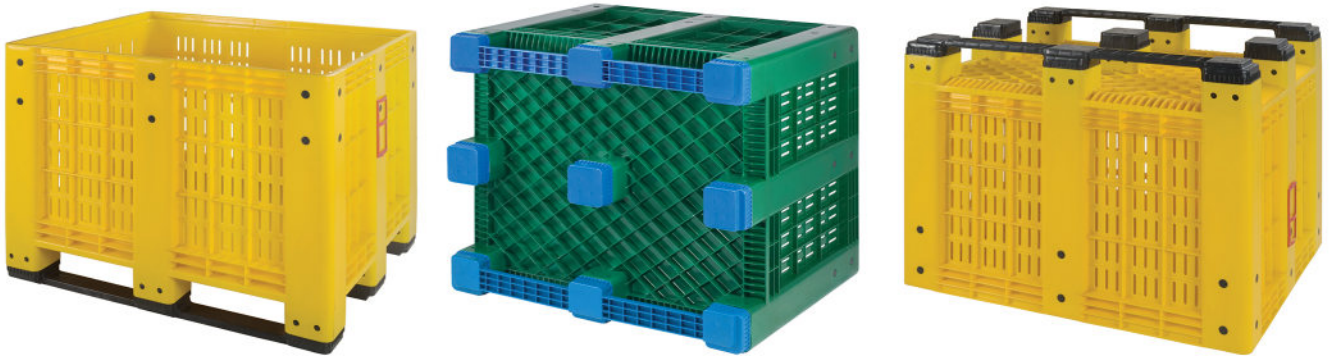
- Any standard RAL color
- RFID tag
- Wheels
- Lid
- Foldable wall
- Embossing logo



All dimensions may vary ±5 mm due to the production process & raw material characteristics.

## ► BP2-2R

### Ventilated Plastic Pallet Box



#### Specifications:

Material	Virgin HDPE Inj. grade + UV Stabilizer
External Dimension	1200 x 1000 x 915 mm (±5 mm)
Internal Dimension	1110 x 900 x 700 mm (±5 mm)
Net Weight	43.5 Kg (±3%)
Interior Volume	700 Ltr
Static Load	5,000 Kg (5 Boxes)
Dynamic Load	1,000 Kg
Racking Load	1,000 Kg
40' HC Cntr/88 m <sup>3</sup> TRK Capacity	84 / 104 Pcs

The load capacities are based on evenly distributed loads.

#### More details:

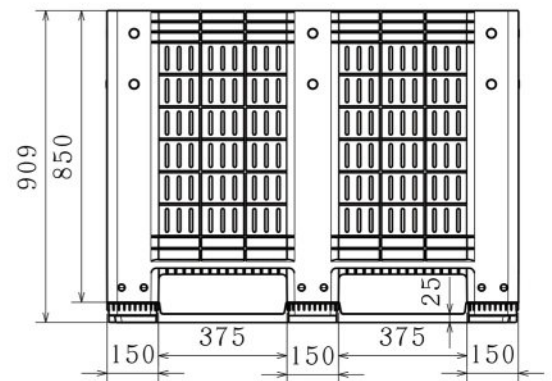


#### Properties:

- Perforated walls
- Closed bottom base
- Anti-slip corners
- 2 skid runners (snap-on)
- 4-way entry
- Forklift / Hand-jack compatible
- One shot
- Stackable

#### Customization:

- Any standard RAL color
- RFID tag
- Wheels
- Lid
- Foldable wall
- Embossing logo



All dimensions may vary ±5 mm due to the production process & raw material characteristics.



# ▶ BP2-9L

## Ventilated Plastic Pallet Box



### Specifications:

Material	Virgin HDPE Inj. grade + UV Stabilizer
External Dimension	1200 x 1000 x 915 mm (±5 mm)
Internal Dimension	1110 x 900 x 700 mm (±5 mm)
Net Weight	42.5 Kg (±3%)
Interior Volume	700 Ltr
Static Load	5,000 Kg (5 Boxes)
Dynamic Load	1,000 Kg
Racking Load	300 Kg
40' HC Cntr/88 m <sup>3</sup> TRK Capacity	84 / 104 Pcs

The load capacities are based on evenly distributed loads.

### More details:

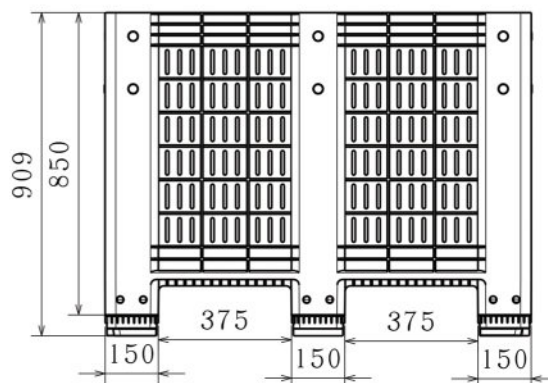


### Properties:

- Perforated walls
- Closed bottom base
- Anti-slip corners
- 9 Legs
- 4-way entry
- Forklift / Hand-jack compatible
- One shot
- Stackable

### Customization:

- Any standard RAL color
- RFID tag
- Wheels
- Lid
- Foldable wall
- Embossing logo



All dimensions may vary ±5 mm due to the production process & raw material characteristics.

## ► SB1

### Plastic Sleeve Pallet Box

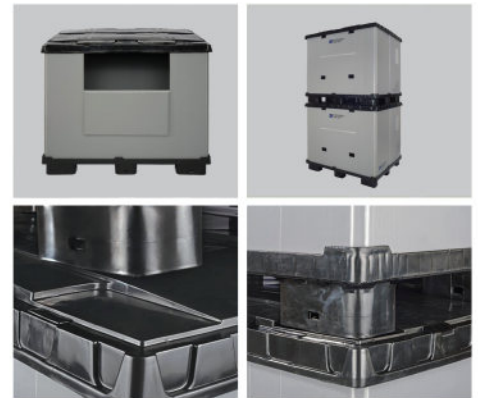


#### Specifications:

Material	Virgin HDPE Inj. grade + UV Stabilizer
External Dimension	1200 x 1000 x 1035 mm (±5 mm)
Internal Dimension	1130 x 920 x 870 mm (±5 mm)
Net Weight	32 Kg (±3%)
Interior Volume	900 Ltr
Static/Stacking Load	500 Kg
Dynamic Load	250 Kg
Racking Load	250 Kg
40' HC Cntr/88 m <sup>3</sup> TRK Capacity	280 / 338 Pcs

The load capacities are based on evenly distributed loads.

#### More details:

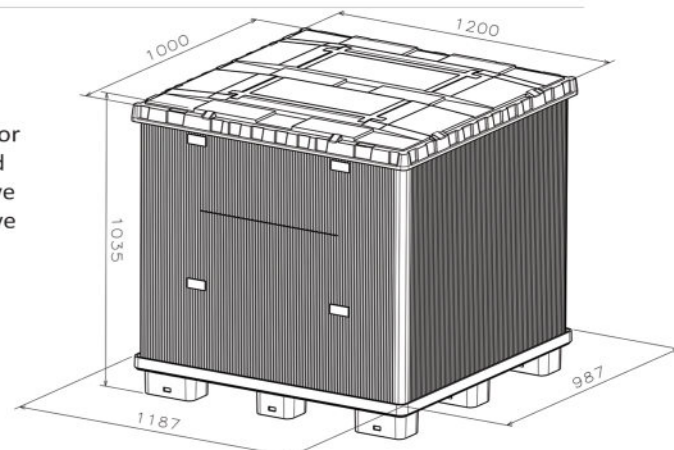


#### Properties:

- 40 mm gutter
- Unloading flap
- Velcro
- 9 Legs
- 4-way entry
- Forklift / Hand-jack compatible
- One shot
- Stackable

#### Customization:

- Any standard RAL color
- Embossing logo on lid
- Printing logo on sleeve
- Central opening sleeve



All dimensions may vary ±5 mm due to the production process & raw material characteristics.

## ► SB2

### Hygienic Plastic Sleeve Pallet Box

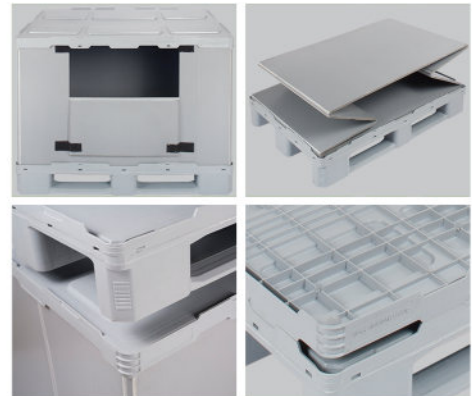


#### Specifications:

Material	Virgin HDPE Inj. grade + UV Stabilizer
External Dimension	1200 x 800 x 900 mm (±5 mm)
Internal Dimension	1180 x 780 x 750 mm (±5 mm)
Net Weight	33.5 Kg (±3%)
Interior Volume	643 Ltr
Static/Stacking Load	1250 Kg
Dynamic Load	1250 Kg
Racking Load	600 Kg
40' HC Cntr/88 m <sup>3</sup> TRK Capacity	216 / 297 Pcs

The load capacities are based on evenly distributed loads.

#### More details:

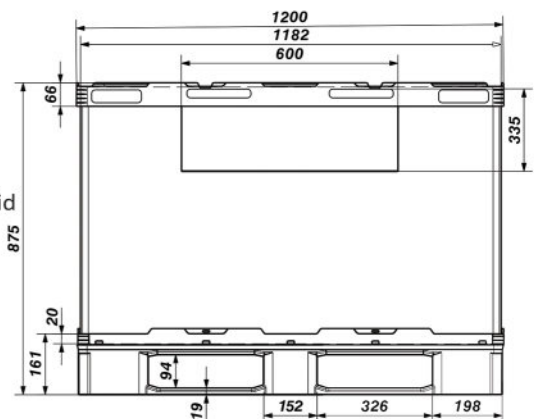


#### Properties:

- 20 mm gutter
- Unloading flap
- Velcro
- 3 skid runners
- 4-way entry
- Forklift / Hand-jack compatible
- Welded
- Stackable

#### Customization:

- Any standard RAL color
- Printing logo on pallet & lid
- Printing logo on sleeve
- Embossing logo on pallet & lid
- Central opening sleeve
- Z-folding sleeve
- M-folding sleeve



All dimensions may vary ±5 mm due to the production process & raw material characteristics.

# ► BPL1

## Plastic Lid of Pallet Box

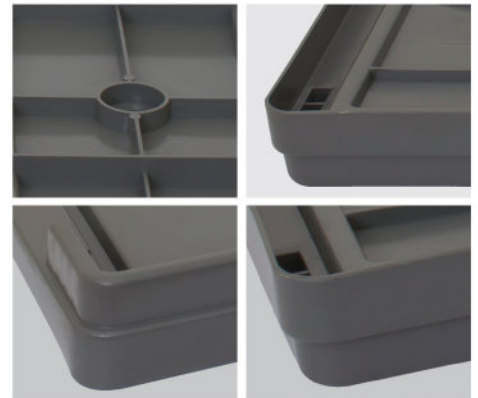


### Specifications:

Material	Virgin HDPE Inj. grade + UV Stabilizer
External Dimension	1210 x 1010 x 80 mm (±5 mm)
Internal Dimension	1200 x 1000 x 40 mm (±5 mm)
Net Weight	7.5 Kg (±3%)
Interior Volume	x
Static Load	x
Dynamic Load	x
Racking Load	x
40' HC Cntr/88 m <sup>3</sup> TRK Capacity	1323 / 1638 Pcs

The load capacities are based on evenly distributed loads.

### More details:

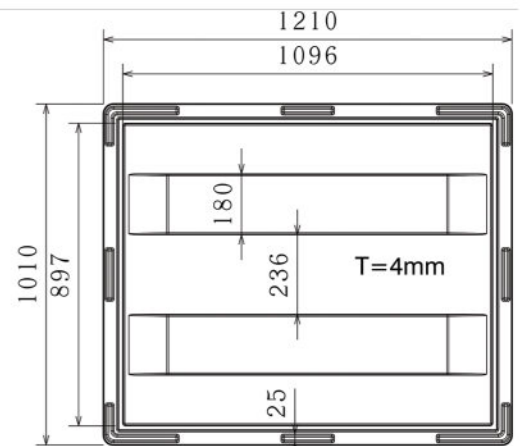
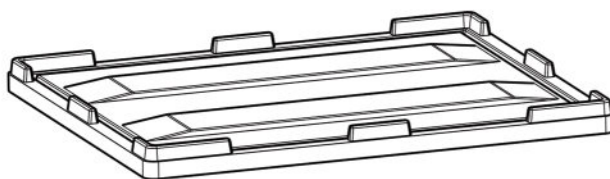


### Properties:

- Solid
- 40 mm Lips
- Round corners
- One shot
- Stackable

### Customization:

- Any standard RAL color
- Embossing logo



All dimensions may vary ±5 mm due to the production process & raw material characteristics.

# IranPlast Group

With decades of remarkable experience in Packaging Industries and Waste Management, IranPlast Group is the notable Middle-Eastern group specialized in Plastic Pallet, Box Pallet and Plastic Waste Bin for different usages.



## Contact Information

Add: Unit 6, No 15, Toopchi St., North Sohrevardi Ave., Tehran – IRAN  
Tel: +98 21 88506080, 88515393  
Fax: +98 21 88763625  
E-mail: [info@iranplast.com](mailto:info@iranplast.com)

### Working Time

Sat-Wed: 09:00-17:00 / Thur: 09:-13:00  
closed on weekend

