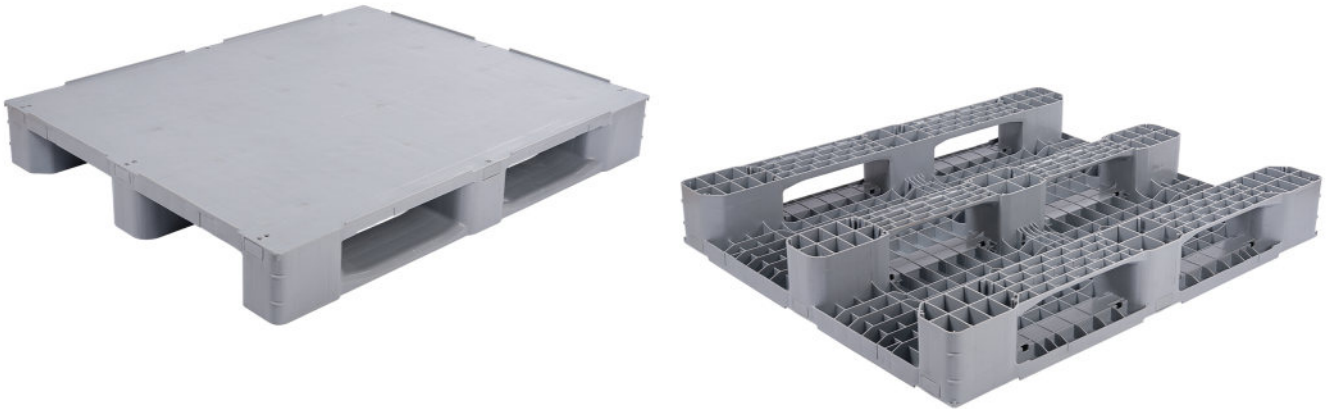


## ► IP5-3R

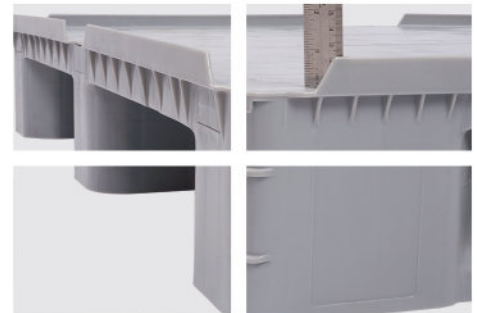
### Industrial Plastic Pallet



#### Specifications:

Material	Virgin HDPE Inj. grade + UV Stabilizer
Dimension	1200 x 1000 x 157 mm (±5 mm)
Static Load	5000 Kg
Dynamic Load	1200 Kg
Racking Load	600 Kg
Pallet Weight	15.5 Kg (±3%)
40' HC Cntr/88 m <sup>3</sup> TRK Capacity	473 / 520 Pcs

#### More details:



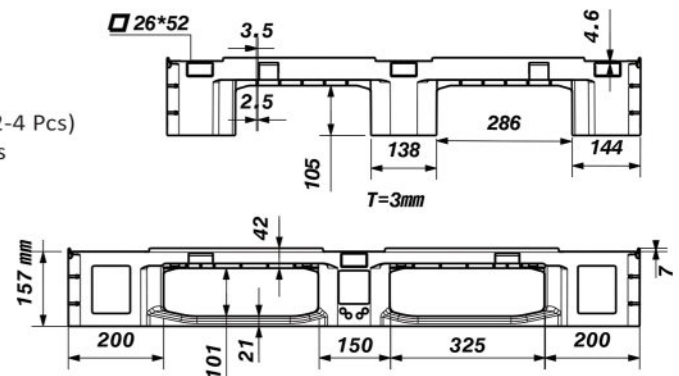
The load capacities are based on evenly distributed loads.

#### Properties:

- Single surface
- Closed top surface
- 7 mm safety rims
- 3 skid runners
- 4-way entry
- Forklift / Hand-jack compatible
- One shot
- Stackable

#### Customization:

- Any standard RAL color
- Anti-slip strips option (2-4 Pcs)
- 3 reinforcement profiles
- 7-22 mm safety rims
- Embossing logo
- Printing logo



All dimensions may vary ±5 mm due to the production process & raw material characteristics.