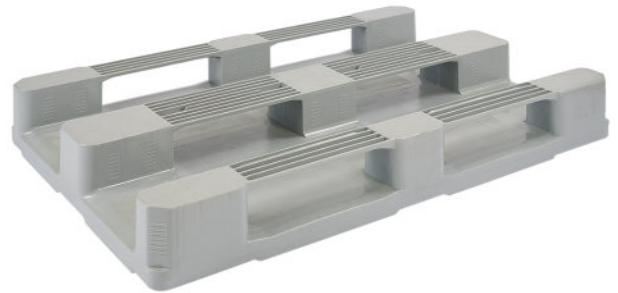


▶ HP1

Hygienic Plastic Pallet



Specifications:

Material	Virgin HDPE Inj. grade + UV Stabilizer
Dimension	1200 x 800 x 160 mm (±5 mm)
Static Load	5000 Kg
Dynamic Load	1250 Kg
Racking Load	1000 Kg
Pallet Weight	18 Kg (±3%)
40' HC Cntr/88 m ³ TRK Capacity	550 / 644 Pcs

More details:



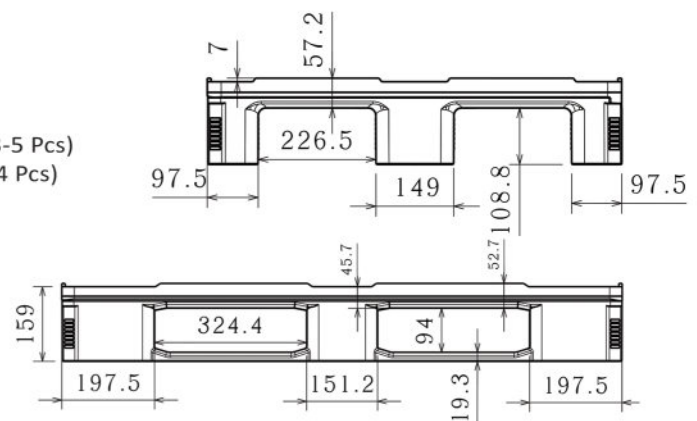
The load capacities are based on evenly distributed loads.

Properties:

- Single surface
- Closed solid top deck
- 7 mm safety rims
- 3 skid runners
- 4-way entry
- Forklift / Hand-jack compatible
- Welded
- Stackable

Customization:

- Any standard RAL color
- Reinforcement profiles (3-5 Pcs)
- Anti-slip strips option (2-4 Pcs)
- Closed solid skid runners
- Safety rims
- Embossing logo
- Printing logo



All dimensions may vary ±5 mm due to the production process & raw material characteristics.