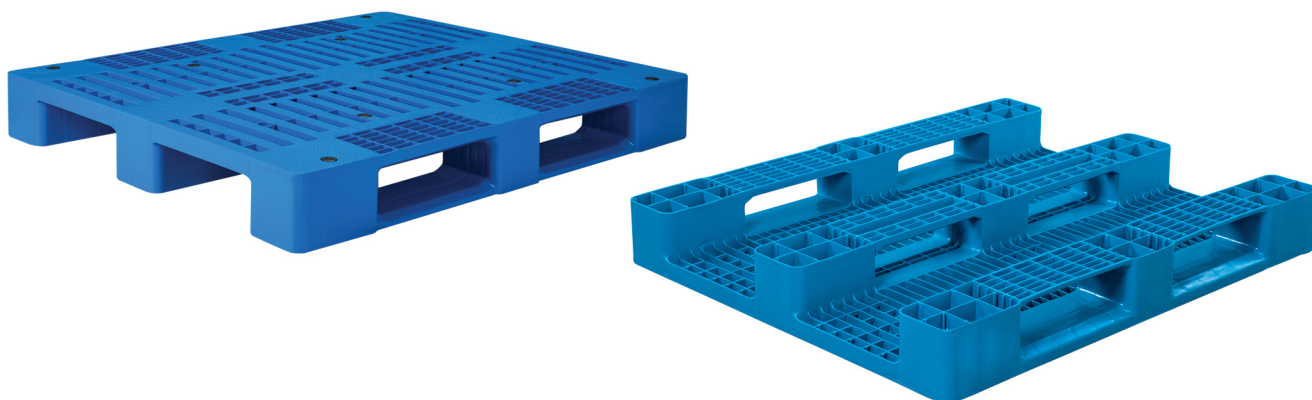


▶ IPM1210

Industrial Plastic Pallet



Specifications:

Material	HDPE/PP Inj. Grade + UV Stabilizer
Dimension	1200 x 1000 x 150 mm
Static Load	5000 Kg
Dynamic Load	1250 Kg
Racking Load	600 Kg
Pallet Weight	15.5 Kg (±3%)
40' HC Cntr/88 m ³ TRK Capacity	550 / 600 Pcs

More details:



Properties:

- Single surface
- Ventilated decks
- Anti-slip rubber plugs
- 3 Skid runners
- 4-way entry
- Forklift / Hand-jack compatible
- One shot
- Stackable

Customization:

- Any standard RAL color
- Embossing logo
- Printing logo

