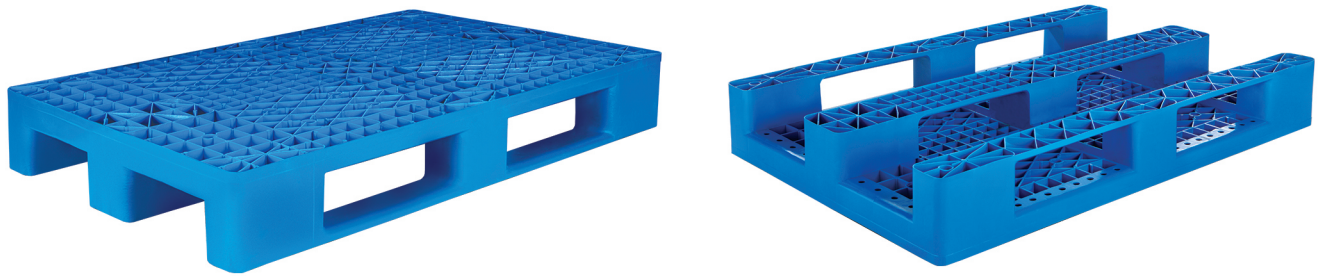


# ► IP1208

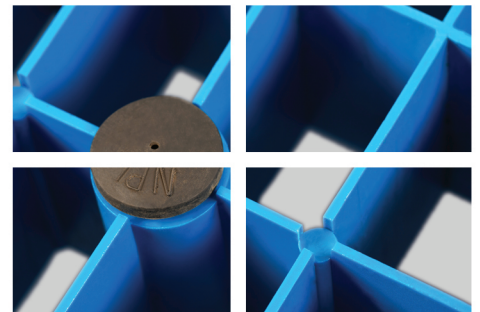
## Industrial Plastic Pallet



### Specifications:

|  |                                    |
|--|------------------------------------|
| Material                                   | HDPE/PP Inj. Grade + UV Stabilizer |
| Dimension                                  | 1200 x 800 x 170 mm                |
| Static Load                                | 5000 Kg                            |
| Dynamic Load                               | 1000 Kg                            |
| Racking Load                               | 500 Kg                             |
| Pallet Weight                              | 13.5 Kg (±3%)                      |
| 40' HC Cntr/88 m <sup>3</sup> TRK Capacity | 545 / 580 Pcs                      |

### More details:



### Properties:

- Single surface
- Ventilated decks
- Anti-slip rubber plugs
- 3 Skid runners
- 4-way entry
- Forklift / Hand-jack compatible
- One shot
- Stackable

### Customization:

- Any standard RAL color
- Embossing logo
- Printing logo

