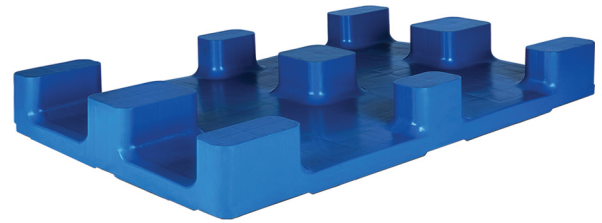


## ▶ HP1208/9L

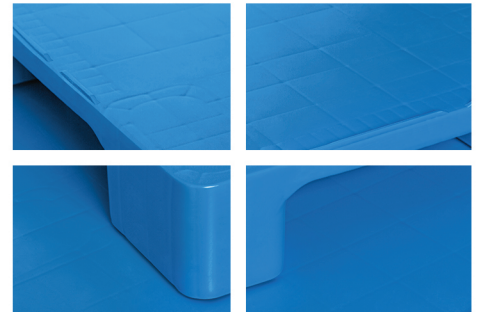
### Hygienic Plastic Pallet



#### Specifications:

Material	HDPE/PP Inj. Grade + UV Stabilizer
Dimension	1200 x 800 x 130 mm
Static Load	5000 Kg
Dynamic Load	1250 Kg
Racking Load	x
Pallet Weight	14 Kg (±3%)
40' HC Cntr/88 m <sup>3</sup> TRK Capacity	704 / 734 Pcs

#### More details:



#### Properties:

- Single surface
- Closed solid decks
- 7 mm safety rims
- 9 Legs
- 4-way entry
- Forklift / Hand-jack compatible
- Welded
- Stackable

#### Customization:

- Any standard RAL color
- Anti-slip strips option (2-4 Pcs)
- Printing logo
- Safety rims

